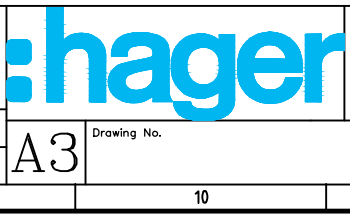


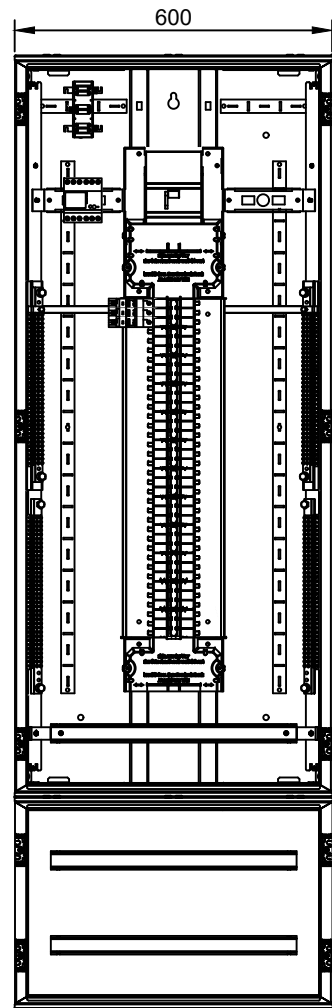
Rev	Date	Drawn	Checked	Approved	Description
0	08/09/25	DP	DP		FOR APPROVAL

The information on this drawing is the property of Hager Electro. It is disclosed in confidence and is not to be reproduced, used or disclosed in part or in whole except for the purpose for which furnished.

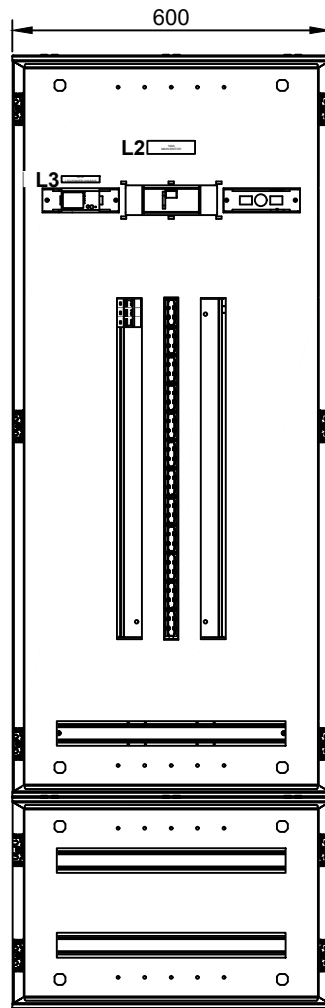
WHOLESALER: _____ CONTRACTOR: _____
 Cod File: _____ Date: _____
 QUOTE NUMBER : _____



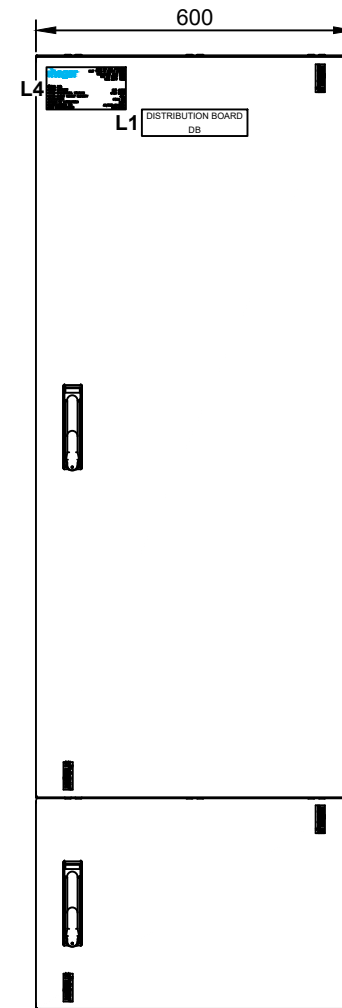
Title: OCULAR EVSE
 EV-DB OUTDOOR IP66 72 POLE
 SINGLE LINE DIAGRAM
 Sheet 1 of 3 Revision 0



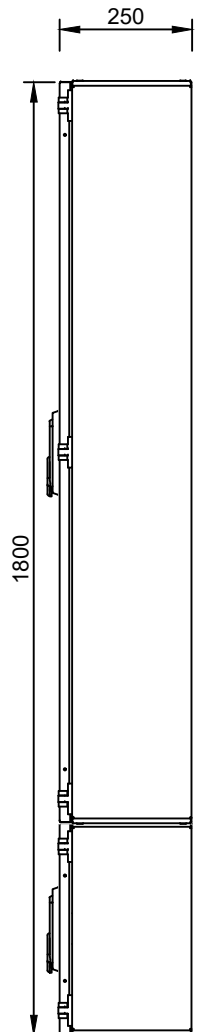
FRONT VIEW
(ESCUTCHEON & DOOR REMOVED)



ESCUTCHEON VIEW



DOOR VIEW



SIDE VIEW

NOTES

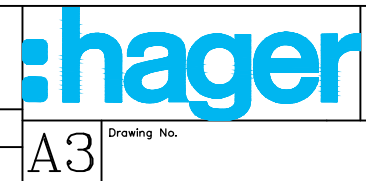
- 1/ ALL SWITCHBOARDS ASSEMBLED & WIRED BY HAGER ARE IN ACCORDANCE WITH AS/NZS 614:39.1, AS/NZS3000 AND THE SERVICE AND INSTALLATION RULES OF NSW
- 2/ ELITE ENCLOSURE 2 X 8 POLE DIN AND REMOVABLE 24 POLE DIN SECTION
- 3/ FAULT CURRENT RATED AT MCBs 6kA
FAULT CURRENT RATED AT CHASSIS 20KA
FOR 0.2 SEC
- 4/ FIELD REVERSIBLE DOOR AND HINGED ESCUTCHEON
SWING HANDLE WITH KEY LOCK
POSITIVE MCB ALIGNMENT
CIRCUIT IDENTIFICATION CARD
- 5/ VARIOUS INCOMER OPTIONS
- 6/ COLOUR: GREY RAL7035

EQUIPMENT SCHEDULE			
ITEM	QTY	CATALOG	DESCRIPTION
1	1	EC2S25OCT	Current transformer 250/5 2,5VA Kl. 1
2	1	JKM01	Multi-Function Meter Pulsed/Modbus Single Input (din mount) - 1 channel
3	1	JPACTH2	CURRENT TRANSFORMERS MOUNTING PLATE
4	1	JPEEXTDW	ELITE EXT BOX - 400MM - RAL7035 48 POLE DIN RAIL
5	1	JPE7200S25DW	DB, ELITE, 72P, 250A ISO-DIN-GR
6	10	JVC0PFL	SAFETY POLE FILLERS 1PK (10 pole fillers per pack)
7	1	MSN306	3-Pole MCB C CURVE 6kA 6A
8	1	PGMF1300AU	METER VOLTAGE SUPPLY CABLE - 1.3M
9	1	PGRJ500	RJ45 CONNECTOR CABLE 67 L700S LSZH, 0.5M
10	1	STACK_ENCLOSURE	STACK AND FIT TWO ENCLOSURES

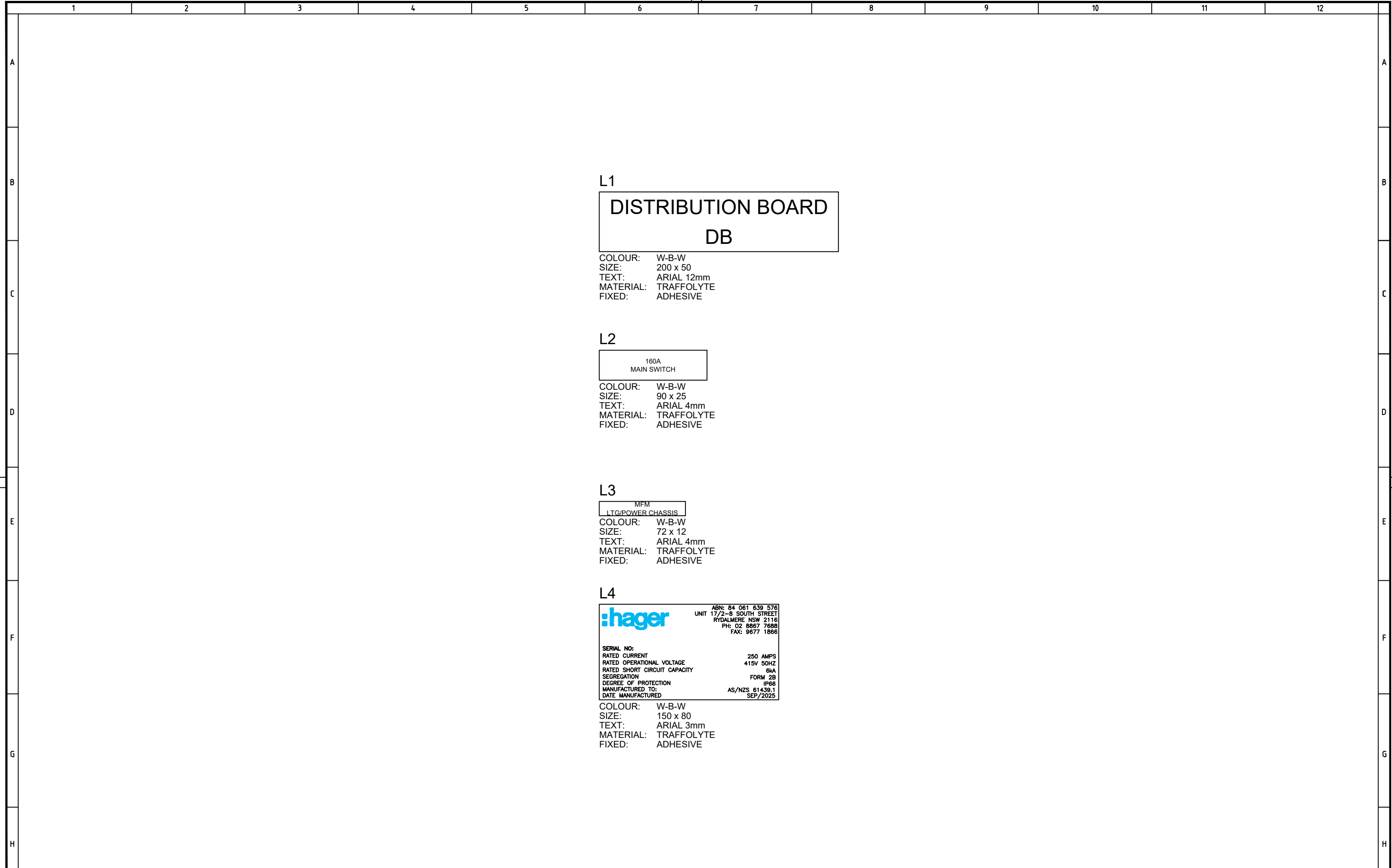
Rev	Date	Drawn	Checked	Approved	Description
0	08/09/25	DP	DP		FOR APPROVAL

The information on this drawing is the property of Hager Electro. It is disclosed in confidence and is not to be reproduced, used or disclosed in part or in whole except for the purpose for which furnished.

WHOLESALER:	CONTRACTOR:
Cod File:	Date:
QUOTE NUMBER :	



Title: OCULAR EVSE EV-DB OUTDOOR IP66 72 POLE	
LAYOUT	Sheet 2 of 3
Revision 0	



L1
DISTRIBUTION BOARD
DB

COLOUR: W-B-W
 SIZE: 200 x 50
 TEXT: ARIAL 12mm
 MATERIAL: TRAFFOLYTE
 FIXED: ADHESIVE


L2
 160A
 MAIN SWITCH

COLOUR: W-B-W
 SIZE: 90 x 25
 TEXT: ARIAL 4mm
 MATERIAL: TRAFFOLYTE
 FIXED: ADHESIVE

L3
 MFM
 LTG/POWER CHASSIS

COLOUR: W-B-W
 SIZE: 72 x 12
 TEXT: ARIAL 4mm
 MATERIAL: TRAFFOLYTE
 FIXED: ADHESIVE

L4



ABN: 84 061 639 576
 UNIT 17/2-8 SOUTH STREET
 RYDALMERE NSW 2116
 PH: 02 8867 7688
 FAX: 9677 1866

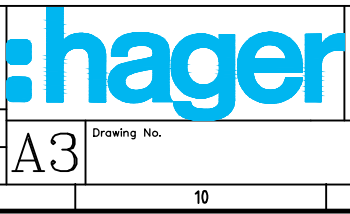
SERIAL NO:
 RATED CURRENT: 250 AMPS
 RATED OPERATIONAL VOLTAGE: 415V 50HZ
 RATED SHORT CIRCUIT CAPACITY: 6kA
 SEGREGATION: FORM 2B
 DEGREE OF PROTECTION: IP66
 MANUFACTURED TO: AS/NZS 61439.1
 DATE MANUFACTURED: SEP/2025

COLOUR: W-B-W
 SIZE: 150 x 80
 TEXT: ARIAL 3mm
 MATERIAL: TRAFFOLYTE
 FIXED: ADHESIVE

Rev	Date	Drawn	Checked	Approved	Description
0	08/09/25	DP	DP		FOR APPROVAL

The information on this drawing is the property of Hager Electro. It is disclosed in confidence and is not to be reproduced, used or disclosed in part or in whole except for the purpose for which furnished.

WHOLESALE: _____ CONTRACTOR: _____
 Cod File: _____ Date: _____
 QUOTE NUMBER : _____



Title: OCULAR EVSE
 EV-DB OUTDOOR IP66 72 POLE
 LAYOUT
 Sheet 3 of 3 Revision 0