

(AU) RCD add-on block (AOB)

for MCB:

- NCNxxxA
- NDNxxxA
- NTxxxC
- MSN3xx
- NBN3xxA

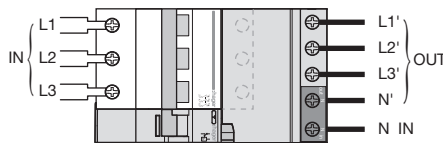
BD163T, BE163T, BF163T



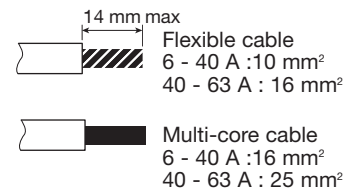
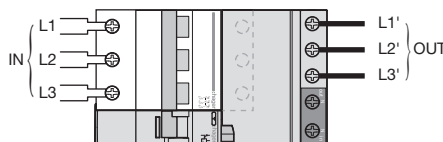
WARNING : Installation by qualified contractors only

Electrical connection

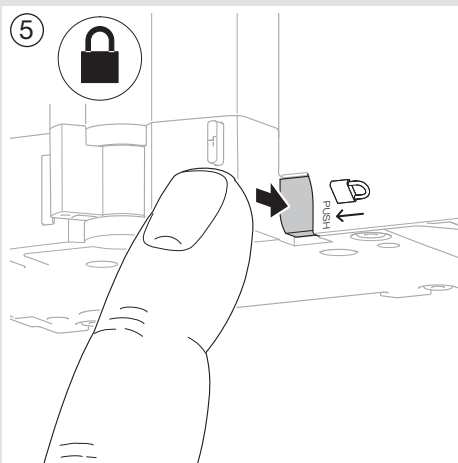
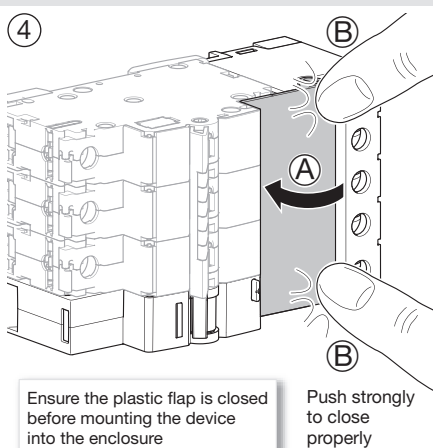
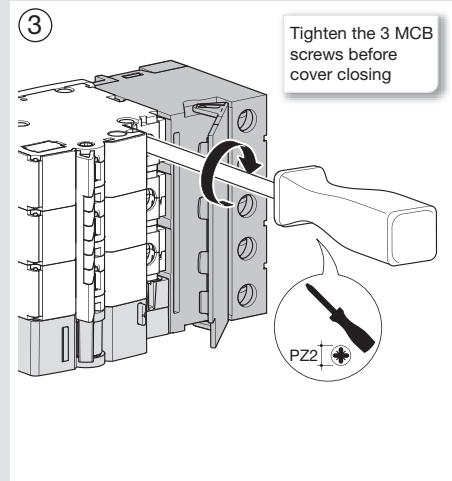
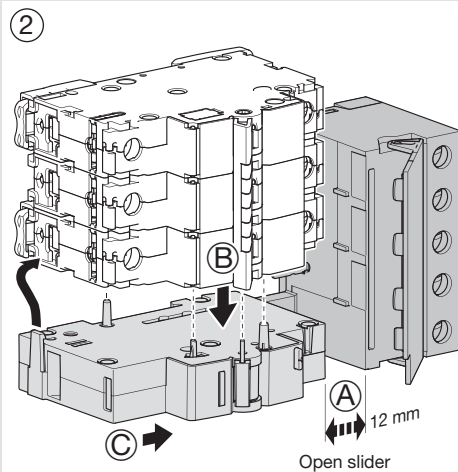
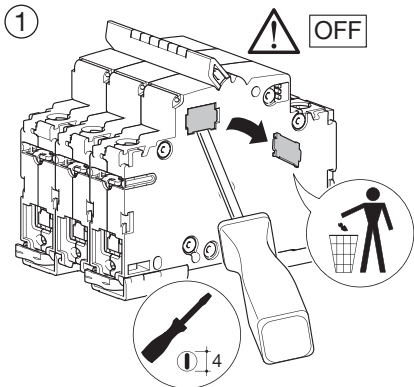
3Ph + N



3Ph



Mounting MCB + AOB = RCBO

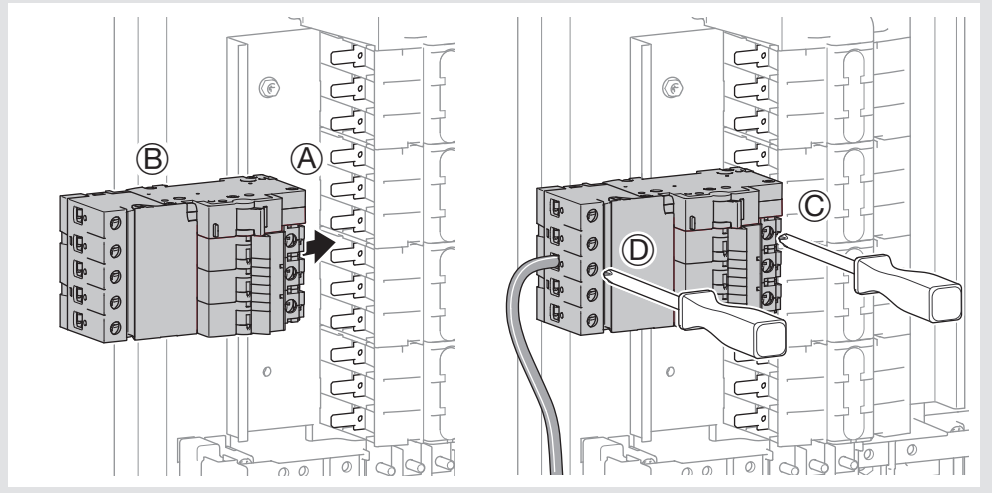
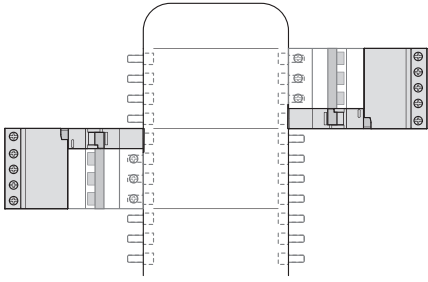


Push the grey button to comply with product standard IEC 61009-1 Annex-G.

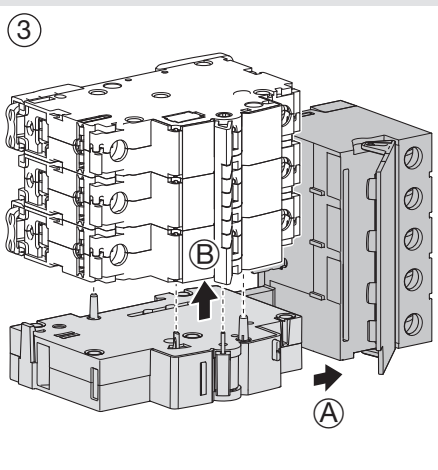
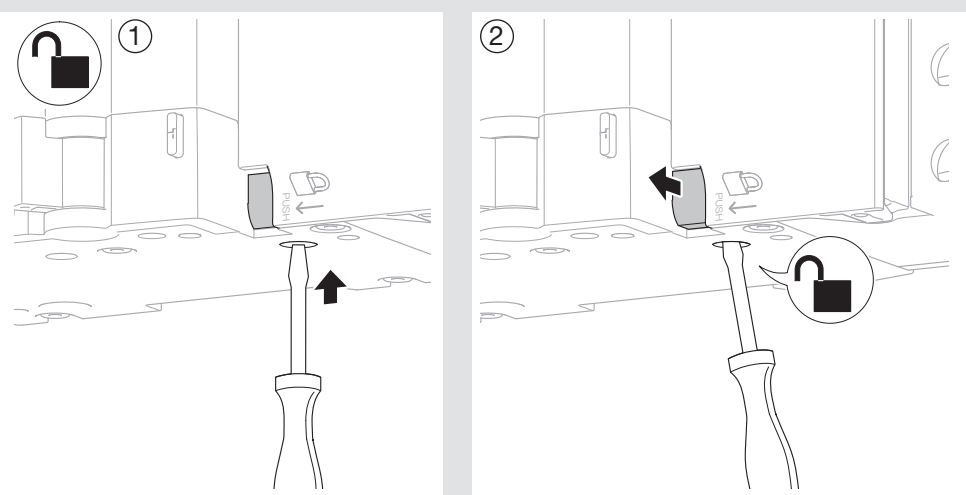
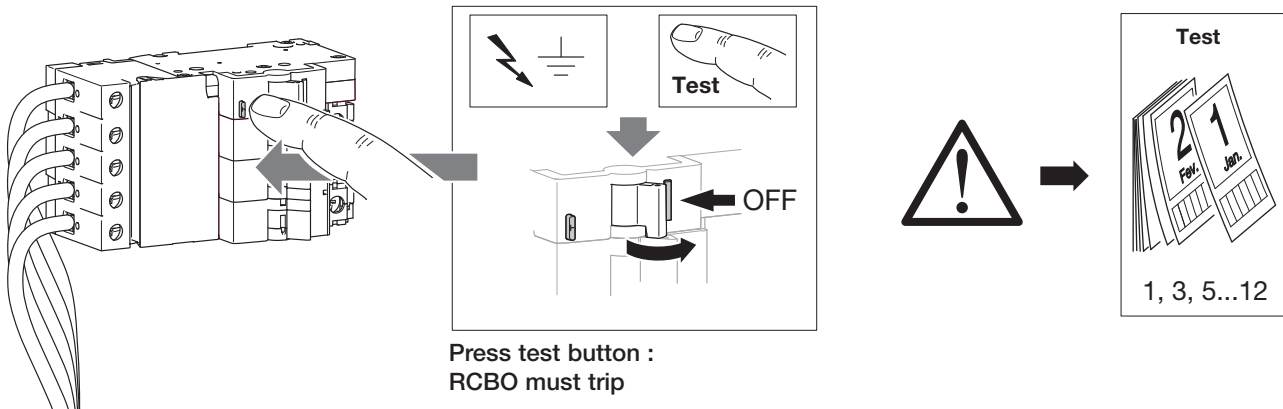
When button pushed MCB + AOB = RCBO (slider is locked)

Mounting into panelboard

WARNING: Disconnect wires before any insulation test, stick the label with the red indication on the side of the panelboard



Test



For removal of AOB from MCB, insert screwdriver, push grey lock button up.

This allows slider to be open again. The AOB remains usable.